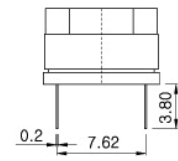
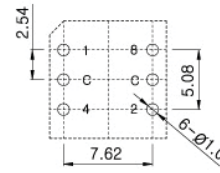
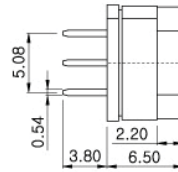
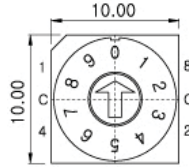


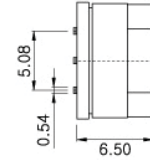
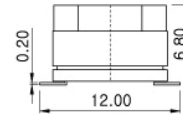
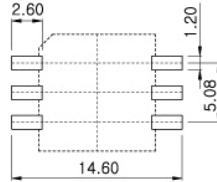
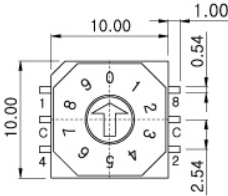
Rotary Switches

10 x 10 mm Sealed Rotary DIP Switches

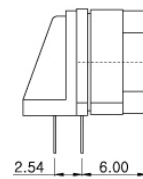
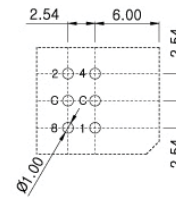
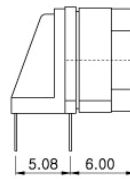
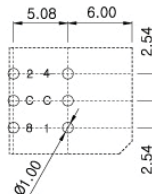
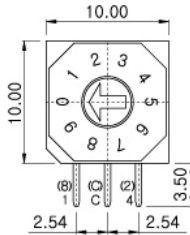
RD82 Series



RD82(T)HR



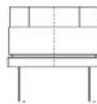
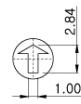
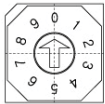
RD82(T)SO



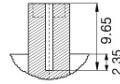
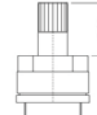
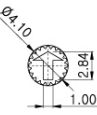
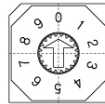
RD82(T)A20

ROTOR TYPE

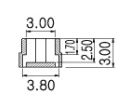
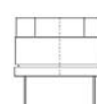
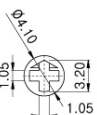
S1



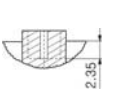
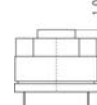
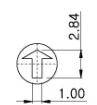
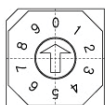
S2



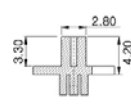
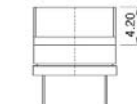
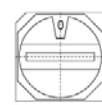
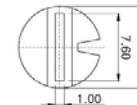
S3



S4



ACCESSORIES



AK - 83 ☐ (applicable to only "S3" actuators
Should be mounted after soldering)

H: Grey C: Red A: Black E: Yellow G: Blue

How to order:

RD82 1 2 3 4 5 6 7

1 SOLDERING CONDITIONS:

blank PCB Hole Type
T Through Hole Reflow (THR)

2 TYPE OF TERMINALS:

H THT Top Adjust Type 3:3
HC THT Top Adjust Type 3:2
A1 THT Right Angle Side Adjust Type
with Rows Spacing 2.54 mm
A2 THT Right Angle Side Adjust Type
with Rows Spacing 5.08 mm
S SMT Top Type 3:3
SC SMT Top Type 3:2

3 TYPE OF CASE:

O Octagon Type
R Round Type

4 ROTOR TYPE (See Above Drawings):

S1 Arrow Type
S2 Shaft Type
S3 Cross Type
S4 Raised Type

5 NO. OF POSITIONS:

04 4 Positions
06 6 Positions
08 8 Positions
10 10 Positions
16 16 Positions

6 CODE (See Page 2):

R Real Code
S Complementary Code
G Gray Code
NR Special Code 1
NS Special Code 2
ND Special Code 3
NE Special Code 4
NF Special Code 5
NG Special Code 6
NH Special Code 7

7 PACKAGING TYPE:

TB Tube
TR Tape & Reel (SMT Only)

Rotary Switches

10 x 10 mm Sealed Rotary DIP Switches

RD82 Series

CODE

Real Code

04 Position	Real Code
0	C 1 2
1	C 1 2
2	C 1 2
3	C 1 2

06 Position	Real Code
0	C 1 2 4 8
1	C 1 2 4 8
2	C 1 2 4 8
3	C 1 2 4 8
4	C 1 2 4 8
5	C 1 2 4 8

08 Position	Real Code
0	C 1 2 4 8
1	C 1 2 4 8
2	C 1 2 4 8
3	C 1 2 4 8
4	C 1 2 4 8
5	C 1 2 4 8
6	C 1 2 4 8
7	C 1 2 4 8

10 Position	Real Code
0	C 1 2 4 8
1	C 1 2 4 8
2	C 1 2 4 8
3	C 1 2 4 8
4	C 1 2 4 8
5	C 1 2 4 8
6	C 1 2 4 8
7	C 1 2 4 8
8	C 1 2 4 8
9	C 1 2 4 8

16 Position	Real Code
0	C 1 2 4 8
1	C 1 2 4 8
2	C 1 2 4 8
3	C 1 2 4 8
4	C 1 2 4 8
5	C 1 2 4 8
6	C 1 2 4 8
7	C 1 2 4 8
8	C 1 2 4 8
9	C 1 2 4 8
10	C 1 2 4 8
11	C 1 2 4 8
12	C 1 2 4 8
13	C 1 2 4 8
14	C 1 2 4 8
15	C 1 2 4 8

Complementary Code

04 Position	Complement Code
0	C 1 2
1	C 1 2
2	C 1 2
3	C 1 2

06 Position	Complement Code
0	C 1 2 4 8
1	C 1 2 4 8
2	C 1 2 4 8
3	C 1 2 4 8
4	C 1 2 4 8
5	C 1 2 4 8

08 Position	Complement Code
0	C 1 2 4 8
1	C 1 2 4 8
2	C 1 2 4 8
3	C 1 2 4 8
4	C 1 2 4 8
5	C 1 2 4 8
6	C 1 2 4 8
7	C 1 2 4 8

10 Position	Complement Code
0	C 1 2 4 8
1	C 1 2 4 8
2	C 1 2 4 8
3	C 1 2 4 8
4	C 1 2 4 8
5	C 1 2 4 8
6	C 1 2 4 8
7	C 1 2 4 8
8	C 1 2 4 8
9	C 1 2 4 8

16 Position	Complement Code
0	C 1 2 4 8
1	C 1 2 4 8
2	C 1 2 4 8
3	C 1 2 4 8
4	C 1 2 4 8
5	C 1 2 4 8
6	C 1 2 4 8
7	C 1 2 4 8
8	C 1 2 4 8
9	C 1 2 4 8
10	C 1 2 4 8
11	C 1 2 4 8
12	C 1 2 4 8
13	C 1 2 4 8
14	C 1 2 4 8
15	C 1 2 4 8

Gray Code

10 Position	Gray Code
0	C 1 2 4 8
1	C 1 2 4 8
2	C 1 2 4 8
3	C 1 2 4 8
4	C 1 2 4 8
5	C 1 2 4 8
6	C 1 2 4 8
7	C 1 2 4 8
8	C 1 2 4 8
9	C 1 2 4 8

16 Position	Gray Code
0	C 1 2 4 8
1	C 1 2 4 8
2	C 1 2 4 8
3	C 1 2 4 8
4	C 1 2 4 8
5	C 1 2 4 8
6	C 1 2 4 8
7	C 1 2 4 8
8	C 1 2 4 8
9	C 1 2 4 8
10	C 1 2 4 8
11	C 1 2 4 8
12	C 1 2 4 8
13	C 1 2 4 8
14	C 1 2 4 8
15	C 1 2 4 8

Special Code

10 Position	Real Code
0	C 1 2 4 8
1	C 1 2 4 8
2	C 1 2 4 8
3	C 1 2 4 8
4	C 1 2 4 8
5	C 1 2 4 8
6	C 1 2 4 8
7	C 1 2 4 8
8	C 1 2 4 8
9	C 1 2 4 8

16 Position	Complement Code
0	C 1 2 4 8
1	C 1 2 4 8
2	C 1 2 4 8
3	C 1 2 4 8
4	C 1 2 4 8
5	C 1 2 4 8
6	C 1 2 4 8
7	C 1 2 4 8
8	C 1 2 4 8
9	C 1 2 4 8
10	C 1 2 4 8
11	C 1 2 4 8
12	C 1 2 4 8
13	C 1 2 4 8
14	C 1 2 4 8
15	C 1 2 4 8

04 Position	Dezimal
0	C 1 2 3 4
1	C 1 2 3 4
2	C 1 2 3 4
3	C 1 2 3 4

06 Position	Real Code
0	C 1 2 4 8
1	C 1 2 4 8
2	C 1 2 4 8
3	C 1 2 4 8
4	C 1 2 4 8
5	C 1 2 4 8

16 Position	Complement Code
0	C 1 2 4 8
1	C 1 2 4 8
2	C 1 2 4 8
3	C 1 2 4 8
4	C 1 2 4 8
5	C 1 2 4 8
6	C 1 2 4 8
7	C 1 2 4 8
8	C 1 2 4 8
9	C 1 2 4 8
10	C 1 2 4 8
11	C 1 2 4 8
12	C 1 2 4 8
13	C 1 2 4 8
14	C 1 2 4 8
15	C 1 2 4 8

04 Position	Real Code
0	C 1 2
1	C 1 2
2	C 1 2
3	C 1 2

04 Position	Real Code
0	C 1 2
1	C 1 2
2	C 1 2
3	C 1 2

SPECIFICATIONS

1. Style:

This specification describes "Rotary Switch" mainly used as signal switch of electric devices with the general requirements of mechanical and electrical characteristics.

1.1 Operating Temperature for PCB Hold Type: -20°C to +70°C

Storage Temperature Range: -40°C to +85°C

1.2 Operating / Storage Temperature Range for THR Type: -60°C to +125°C


2. Current Range:

2.1 None-Switching : 400mA, 24V

2.2 Switching : 150mA, 24V

3. Type of Actuation : Rotating

4. Test Sequence :

ELECTRIC PERFORMANCE	ITEM	DESCRIPTION	TEST CONDITIONS	REQUIREMENTS
	1	Visual Examination	By visual examination check without any out pressure & testing.	There shall be no defects that affect the serviceability of the product
	2	Contact Resistance	① To be measured between the two terminals associated with each switch pole ② Measurements shall be made with a 1kHz shall current contact resistance meter	80mΩ max
	3	Insulation Resistance	250V DC, 1minute ±5seconds	100MΩ min
	4	Dielectric withstanding Voltage	250V AC(50Hz or 60Hz)shall be applied between all the adjacent terminal and between the terminal and the frame For 1 minute	There shall be no breakdown or flash over
	5	Operation Force	Applied in the direction of operation 	700gf/cm. max

Rotary Switches

10 x 10 mm Sealed Rotary DIP Switches

RD82 Series

M E C H A N I C A L P E R F O R M A N C E	6	Stop Strength	A static load of 1 kgf is applied in the vertical direction operated for a period of 15 seconds.	There shall be no sign of damage mechanically.					
	7	Soldering Heat Resistance	<div>1. Soldering Temperature:<table><tr><td>P.C.Board terminal</td><td>SMT Type terminal</td></tr><tr><td>260℃ ±5℃</td><td rowspan="2">See the temperature profile</td></tr><tr><td>5±1sec</td></tr></table></div> <div>2. Duration of solder Immersion: 5 ±1 sec</div> <div>3. Frequency of soldering process: 2times max (PCB is 1.6mm in thickness)</div>	P.C.Board terminal	SMT Type terminal	260℃ ±5℃	See the temperature profile	5±1sec	As shown in item 2~6
	P.C.Board terminal	SMT Type terminal							
	260℃ ±5℃	See the temperature profile							
	5±1sec								
8	Vibration	Shall be vibrated in accordance with method 201A of MIL-STD-202F 1)Frequency: 10-55-10 Hz 1 min/cycle. 2)Direction: 3 vertical directions including the direction of operation. 3)Test time: 2 hours each direction	As shown in item 2~6						
9	Shock	Shall be shocked in accordance with method 213B condition A of MIL-STD-202F 1)Acceleration: 50G 2>Action time: 11 ±1 m sec. 3)Testing direction: 6 sides. 4)Test cycle: 3 times in each direction	As shown in item 2~6						
10	Solderabi-lity	1)Soldering temperature: 230 ±5℃ 2)Flux: 5-10 seconds. 3)Duration of solder limmersion: 3 ±0.5sec	No anti-soldering and coverage of dipping into solder must more than 75% was requested						

Rotary Switches

10 x 10 mm Sealed Rotary DIP Switches

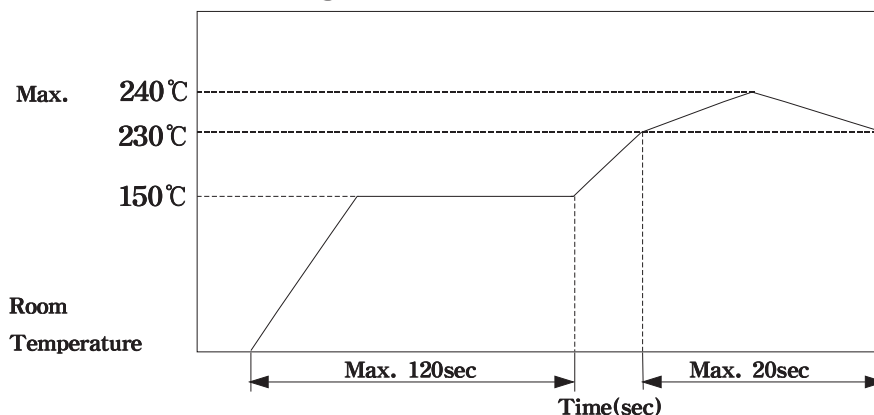
RD82 Series

	11	Operation Life	Measurements shall be made following the test set forth below: 1)25mA, 24V DC resistive load 2)Rate of operation: 15~20 cycles/ minute 3)Step of operation: 10,000 steps	1)As shown in item 3,4 2)Contact Resistance: 200mΩ max 3)Final-after test
W E A T H E R P R O O F	12	Resistance Low Temperature	Following the test set forth below the sample shall be left in normal temperature and humidity conditions for an hour before measurements are made: 1)Temperature: -60℃ ±3℃ 2)Time: 96 hours	As shown in item 2~6
	13	Resistance High Temperature	Following the test set forth below the sample shall be left in normal temperature and humidity conditions for an hour before measurements are made: 1)Temperature: 125℃ ±2℃ 2)Time: 96 hours	1)As shown in item 3~6 2)Contact Resistance: 200mΩ max
	14	Resistance Humidity	Following the test set forth below the sample shall be left in normal temperature and humidity conditions for an hour before measurements are made: 1)Temperature: 40℃ ±2℃ 2)Relative humidity: 90~95% 3)Time: 96 hours	1)As shown in item 4,6 2)Contact Resistance: 200mΩ max 3)Insulation Resistance: 10MΩ min

5. Soldering Conditions:

PCB Hole Type

1)Condition for Soldering



2) It should be used not to allow switch's surface temperature to exceed 240°C.

3)Manual Soldering

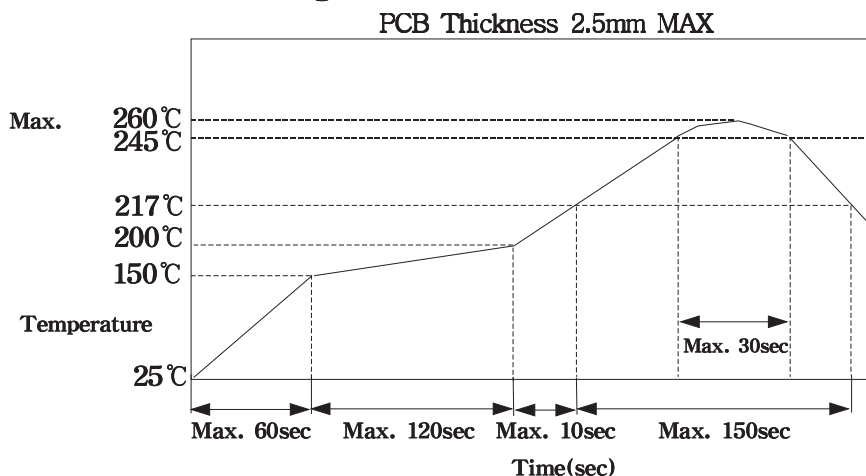
Soldering Temperature	Max. 350°C
Continuous Soldering	Max. 3sec

4)Precautions in Handling

Care should be exercised so that flux from the upper part of the printed circuit board does not adhere to the switch.

THR Type

1)Condition for Soldering



2)The condition mentioned above is the temperature on the Cu foil of PCB surface.

There are where board's temperature greatly differs from switch's surface temperature depending on board's material, size, thickness, etc. Care, therefore, should be used not to allow switch's surface temperature to exceed 260°C.

3)Precautions in Handling

Care should be exercised so that flux from the upper part of the printed circuit board does not adhere to the switch.

Rotary Switches

10 x 10 mm Sealed Rotary DIP Switches

RD82 Series

6. This item is "ROHS" Compliant

7. Part List

NO	PART NAME	Q'TY	MATERIALS	TREATMENT	REMARK
1	COVER	1	PA66 (PCB Hole Type)		Print:Black
2	BASE	1	LCP (THR Type)		
3	ACTUATOR	1	PA66, STS		
4	CONTACT & TERMINAL	1	PHOSPHOR BRONZE	CONTACT AND TERMINAL PLATING: GOLD PLATING OVER NICKEL	Au 0.07 1 μ m Min Ni 0.1 μ m Min
5	PCB	1	EPOXY	PLATING: GOLD PLATING	Au 0.05 μ m Min
6	O-Ring	1	SILICONE		

Rotary Switches

10 x 10 mm Sealed Rotary DIP Switches

RD82 Series

8. Tape & Reel Packaging

